

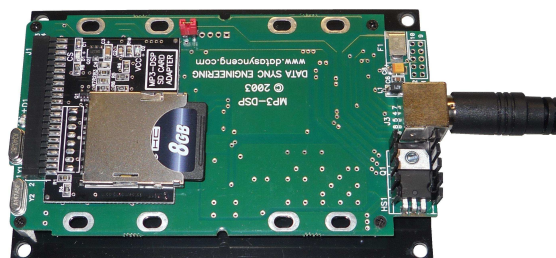
# RMC-MP3/SD

Player System

## The all new SD Card Player

For the ROWE/AMI R84 thru R94 Vinyl Jukebox

**Complete Kit, nothing else to buy !**



- ◆ 100% solid state, no moveable parts, no maintenance
- ◆ SD Card contains only music, no programs to "boot-up"
- ◆ Works with all FAT32 formatted SD Cards 4GB to 128GB\*
- ◆ Supports all MP3 bit rates (we recommend 192Kbps)
- ◆ Combine MP3 songs into a single file for album plays
- ◆ Plug & Play without any modifications to your jukebox

USB 2.0  
SD Adapter



16GB SD Memory Card

\*The SD Memory Card Formatter can be Downloaded here  
[https://www.sdcard.org/downloads/formatter\\_4/](https://www.sdcard.org/downloads/formatter_4/)  
 To format media above 32GB as FAT32, you can run "guiformat.exe"  
 which is available here [www.ridgecrop.demon.co.uk/guiformat.htm](http://www.ridgecrop.demon.co.uk/guiformat.htm)

The RMC-MP3/SD is a micro-computer based adapter that emulates the operation of the ROWE/AMI record mechanism, which in turn, allows the jukebox to select and play 200 MP3 songs from a Secure Digital (SD) memory card. Any vinyl jukebox that uses the 6-08870-xx or 4-07773-xx Central Control Computer or the 4-07221-xx Mechanism Control can be adapted to play high quality MP3 music at up to 320 Kbit/s. This includes models R-84, R-85, R-86, R-87, R-88, R-89, R-90, R-91, R-92, R-93, R-94 and others. Bright LED indicators show the simulation progress. This advanced technology player never needs maintenance and is designed to provide years of reliable service. The no modification upgrade takes only seconds to install or to switch back to vinyl.

Another cool idea would be to join two or more MP3 song files into a single MP3 file for album plays or audio mixing, which is the process of taking recorded tracks and blending them together. One such program is called "Audacity" and is available as a free download at [www.audacityteam.org/download/](http://www.audacityteam.org/download/). Others may be available.

## DISCLAIMER – PLEASE READ

*The RMC-MP3/SD kit was developed for jukebox owners for non public performance use. We do not supply jukebox licenses. It is the jukebox owners responsibility to obtain all applicable licenses for public performance of copyright music.*



**Data Sync Engineering**  
 2 Footbridge Lane, Box 539  
 Blairstown, New Jersey 07825

**TEL:** (908) 362-6299  
**FAX:** (908) 362-5889  
**Email:** [sales@datasynceng.com](mailto:sales@datasynceng.com)  
**Web:** [www.cdadapter.com](http://www.cdadapter.com)

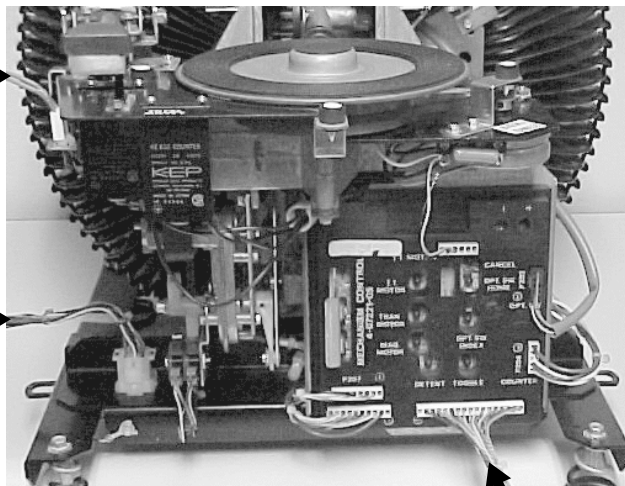
## CONNECTOR DESCRIPTION AND LOCATION

### PHONO CABLE

This is a 4-Pin connector from the Phono input of the amplifier.

### POWER CABLE

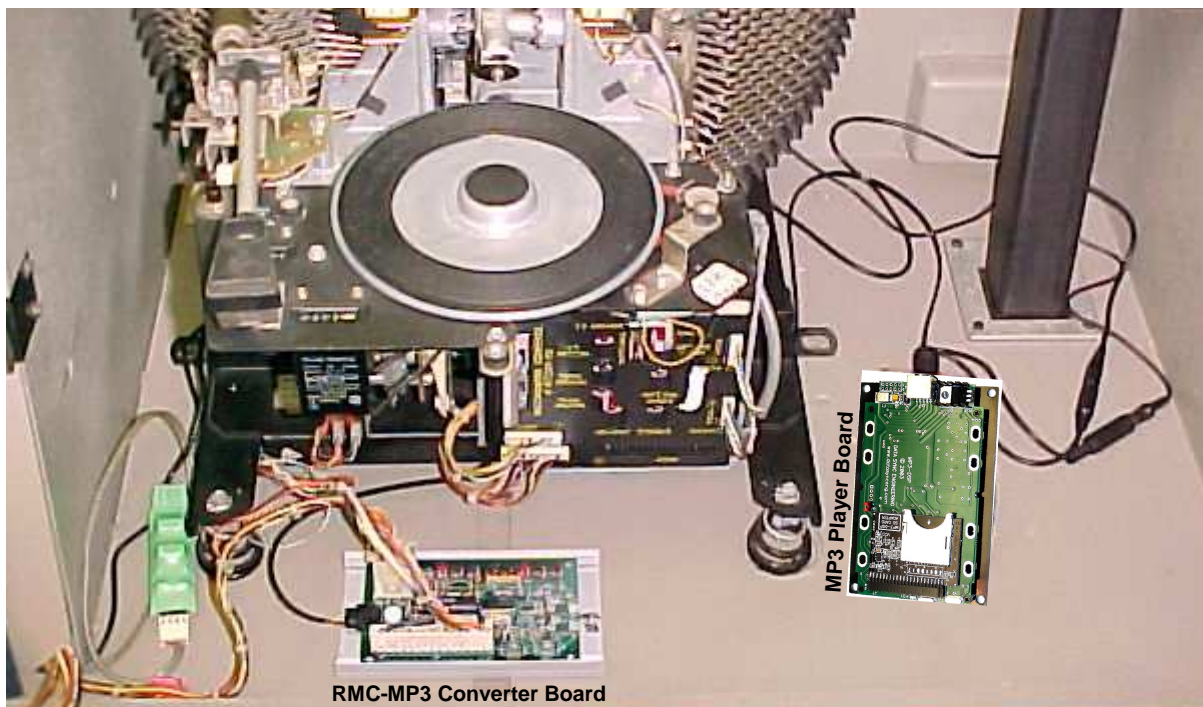
This is a 9-Pin connector from the Power Supply.



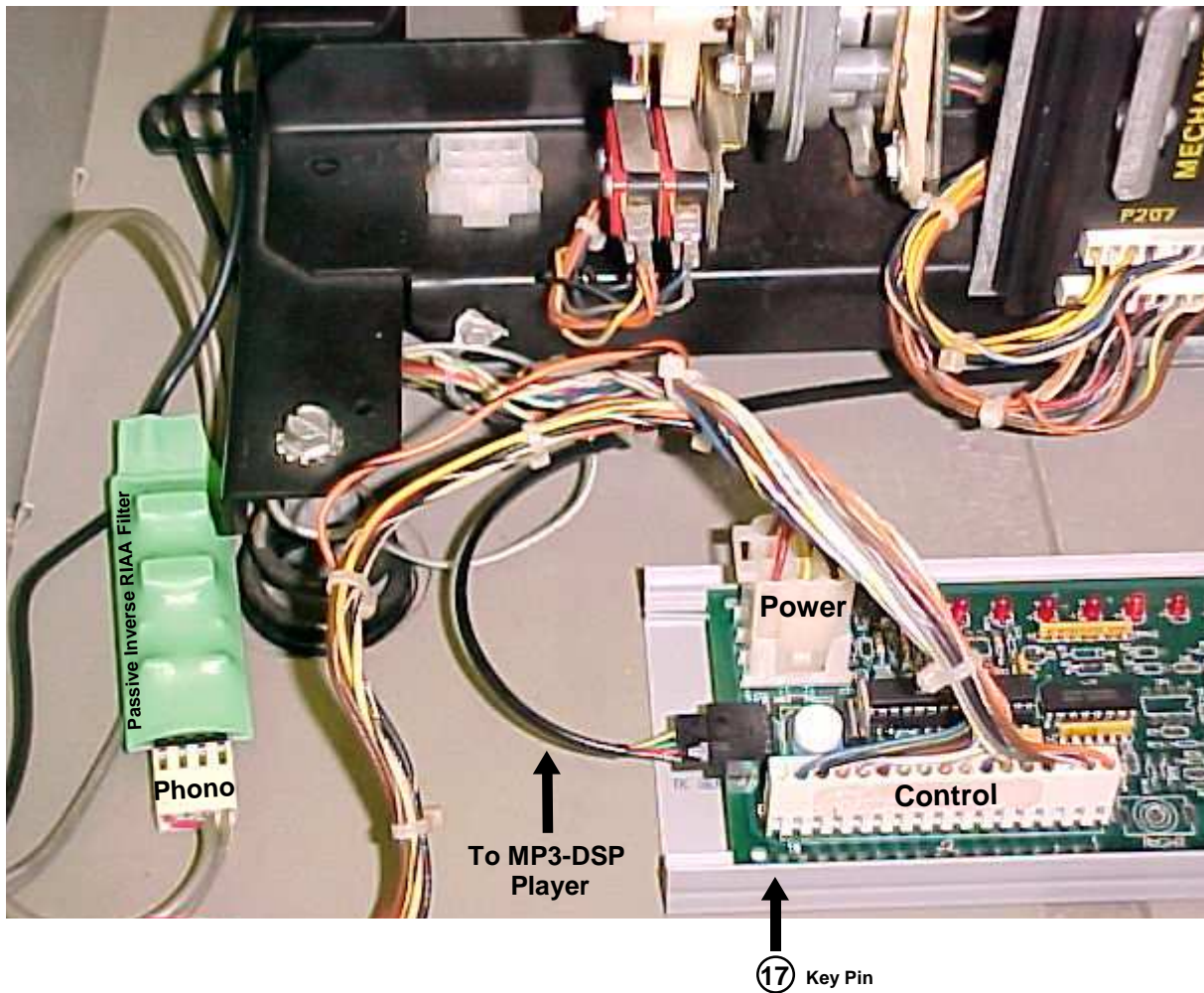
### CONTROL CABLE

This is a 17-Pin connector from the Central Control Computer. Pin 17 may be keyed or blank and must be in the position marked as ⑰

## RMC-MP3/SD INSTALLATION







1. Unplug the jukebox from the outlet. Disconnect the POWER CABLE and CONTROL CABLE from the phonograph and insert into the RMC-MP3 converter board.

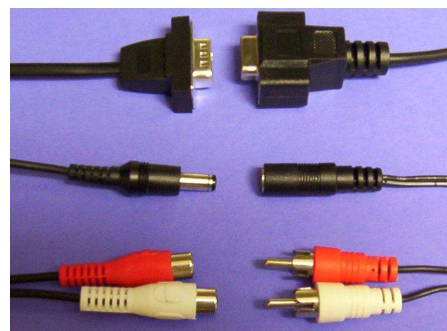
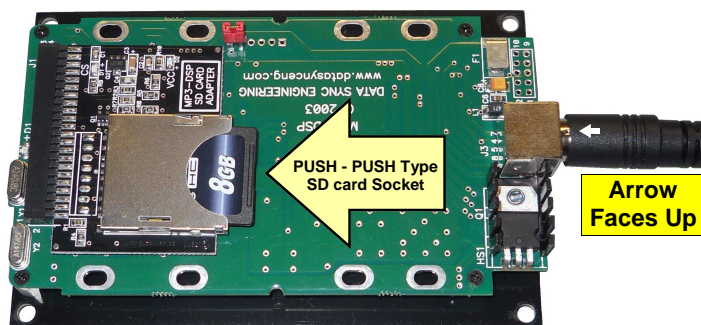
**IMPORTANT ! - Make sure the keyed or blank pin is at the #17 hole position.**

2. Disconnect the PHONO CABLE and plug it onto the Passive Inverse-RIAA filter pins. Insert the MP3 player connector into the RMC-MP3 converter board.

3. Plug in the 9-pin mini DIN connector (arrow or notch facing up).

4. The final step is to connect the cables together

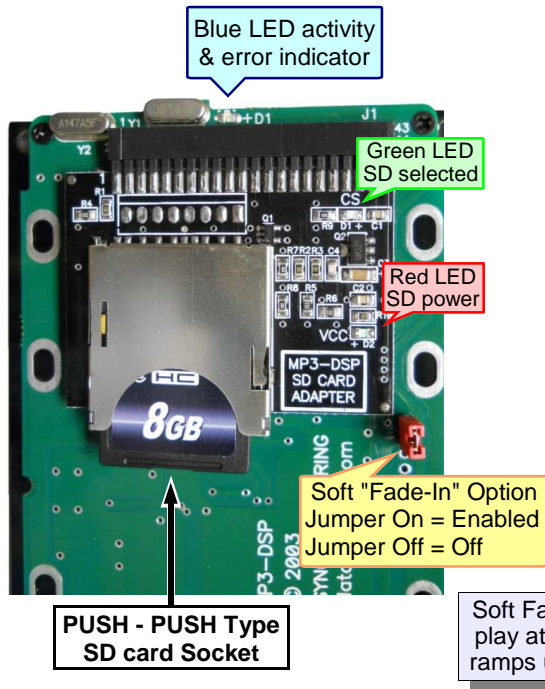
**YOUR JUKEBOX IS NOW CONVERTED TO AN MP3 HARD DISK PLAYER**



The 9-pin player control connector

The DC power supply connector

The Line-Out audio connector



When power is applied to the Digital Player, the blue LED turns on for about 3-sec, turns off, then begins rapid blinking during file indexing. When done, the LED remains off until a selection.

FAULTS - SD CARD MP3 PLAYER (Blue LED)	
Blinks	Error Description
1	Failed Hardware Test Diagnostics
2	FAT32 Filesystem Was Not Found
3	No Folders Found
4	No MP3 Files Found
	If players blue LED rapidly flashing dim and green LED always on No SD Memory Card in Socket or Defective SD Card
	If players blue LED repeating long flash & green LED short flicker Wrong Memory Card Type or Defective SD Card

## ABOUT THE SONG FOLDERS AND FILES

Folders and the MP3 Files within the folders represent each record selection. The first two letters of the folder name and the MP3 file names must begin with two numeric digits to identify the record side (A or B) and record number positions (00-99).

To begin, create 2 folders. One with the two digit number 91 for record selections 100-199 and the other folder 92 for record selections 200-299. After these first two digits you can add any of your own text characters if you choose.

Each MP3 song name starts with a two digit number from 00 to 99. If you want, you can include your own song name text such as "01 It's My Party - Lesley Gore".

To create the MP3 song files from your CD you would use a program to "Rip" the CD tracks to MP3. **Windows Media Player** can be used but make sure, in the Options menu, that the Format is set for MP3 (not WMA). There are many other rippers, such as one by [www.poikosoft.com](http://www.poikosoft.com), that will automatically insert the track numbers and song names.

Another consideration is the bit rate. The bit rate is similar to the resolution of a photo, lower resolution will produce a fuzzy image. For music, bit rates below 128Kbps may start to sound grainy. You can't tell much of a difference using the maximum bit rate of 320Kbps other than very large file sizes. Many agree that the bit rate of 192Kbps is very close to CD quality (as we recommend). Besides, jukeboxes are well tuned and can make anything sound great.

In the example below, some songs of folder 91 are displayed. If you entered record number 106 on the jukebox, the song named 06 in folder number 91 will be played. If you entered record 242, then song named 42 in folder number 92 is played.

### Folder names for "A" and "B" record sides

- 91 A-side 100-199
- 92 B-side 200-299

### MP3 file names for record positions 00-99

- 00 Will You Love Me Tomorrow - The Shirelles.mp3
- 01 It's My Party - Lesley Gore.mp3
- 02 He's So Fine - The Chiffons.mp3
- 03 Easier Said Than Done - The Essex.mp3
- 04 Remember (Walkin' in the Sand) - The Shangri-Las.mp3
- 05 Mama Said - The Shirelles.mp3
- 06 I Can't Stay Mad at You - Skeeter Davis.mp3
- 07 My Boyfriend's Back - The Angels.mp3
- 08 Look in My Eyes - The Changells.mp3
- 09 Chapel of Love - The Dixie Cups.mp3
- 10 Norman - Sue Thompson.mp3